



# GAT MONTHLY MEMBERSHIP PROGRESS REPORT

Results as of: 12/31/2022

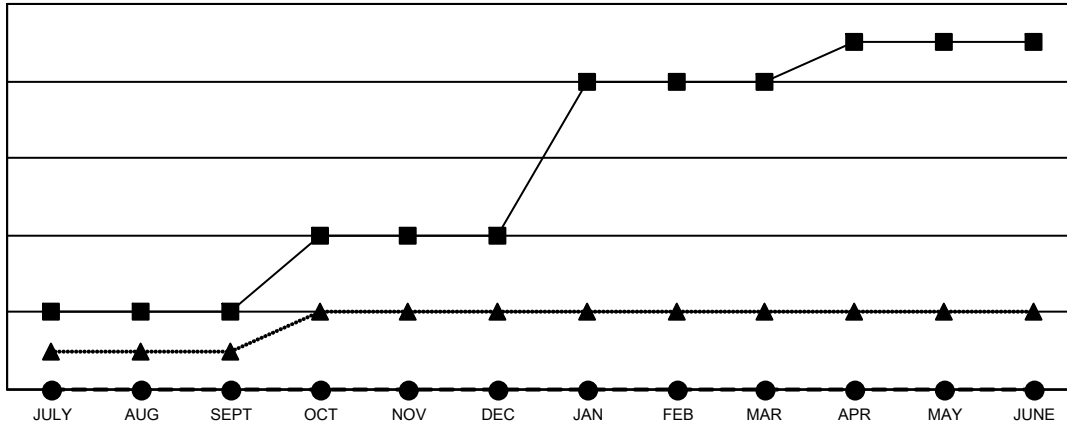
Multiple District 9

LOCATION: IOWA

Clubs			
RESULTS FOR 2022-2023			
QUARTER	NEW CLUB GOAL	NEW CLUBS	DROPPED CLUBS
JULY/AUG/SEPT	2	0	0
OCT/NOV/DEC	2	0	0
JAN/FEB/MAR	4	0	0
APR/MAY/JUNE	1	0	0

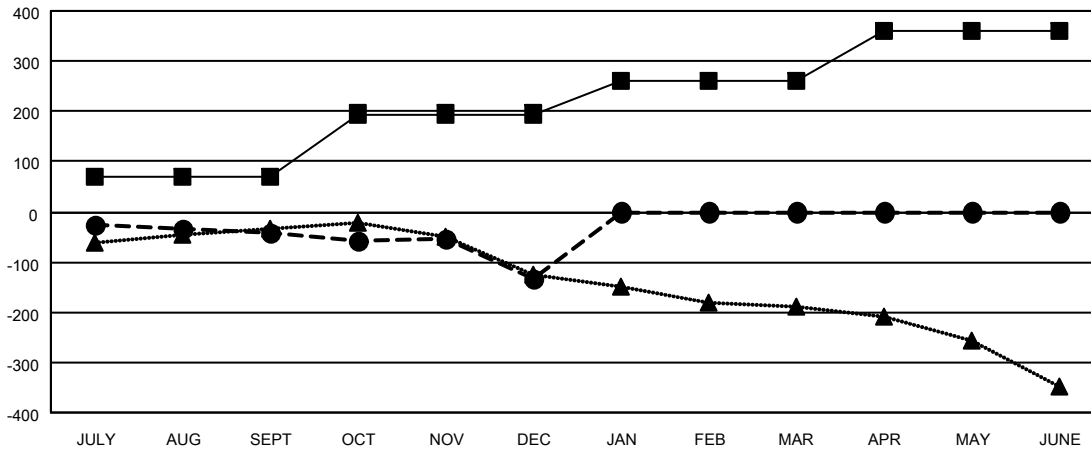
Members			
RESULTS FOR 2022-2023			
QUARTER	MEMBER GROWTH NET GOAL	MEMBER GROWTH ACTUAL	DROPPED MEMBERS ACTUAL (including transfers)
JULY/AUG/SEPT	70	141	169
OCT/NOV/DEC	125	134	214
JAN/FEB/MAR	65	0	0
APR/MAY/JUNE	100	0	0

GOALS AND ACTUAL NEW CLUBS CUMULATIVE



- CURRENT YEAR GOALS FOR NEW CLUBS
- CURRENT YEAR ACTUAL NEW CLUBS
- ▲- LAST YEAR ACTUAL NEW CLUBS

GOALS AND ACTUAL MEMBERS CUMULATIVE



- MEMBER GROWTH NET GOAL
- MEMBER GROWTH ACTUAL
- ▲- LAST YEAR MEMBERSHIP ACTUAL

DROPPED CLUBS: 0	103 CLUBS OF 284 ADDED 1 OR MORE NEW MEMBERS	<b>GENDER DISTRIBUTION</b>
<b>DROPPED MEMBERS</b>	<a href="#">CLICK HERE FOR CUMULATIVE MEMBERSHIP DATA</a>	MALE 4,816 (71.72%)
DECEASED 63		FEMALE 1,897 (28.25%)
CLUB CANCELLED 0		NON BINARY 1 (0.01%)
OTHER 322		PREFER NOT TO ANSWER 1 (0.01%)
<b>TOTAL 385</b>		<b>TOTAL FAMILY UNIT MEMBERS 1,438</b>
		FAMILY MEMBERS PAYING HALF DUES 732